

An aerial photograph of Triangle Park in Washington, D.C. The park is a large, open green space in the center, surrounded by urban development. To the left, there are parking lots and some commercial buildings. To the right, there are several rows of multi-story apartment buildings. A major road, Riggs Road, runs diagonally across the image. The text "RIGGS & SOUTH DAKOTA TRIANGLE PARK COMMUNITY MEETING" is overlaid in large, white, sans-serif capital letters with a thin black outline.

# RIGGS & SOUTH DAKOTA TRIANGLE PARK COMMUNITY MEETING

**TUESDAY, MAY 20  
6:30pm – 7:30 pm**



**DPR**  
DC DEPARTMENT OF PARKS AND RECREATION

**DGS**  
DEPARTMENT OF  
GENERAL SERVICES

**BUILD  
MAINTAIN  
SUSTAIN**



GOVERNMENT OF THE  
DISTRICT OF COLUMBIA  
**DC** MURIEL BOWSER, MAYOR

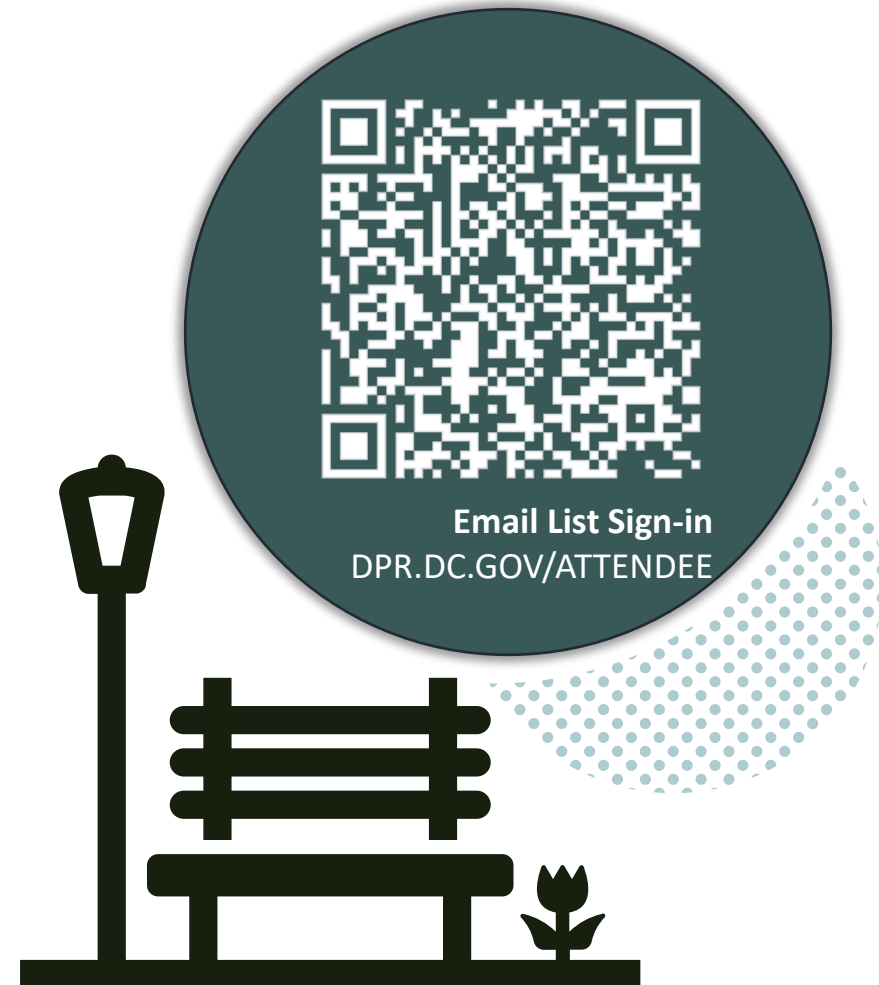
# RULES OF THE ROAD

---

# WELCOME!

THANK YOU FOR YOUR PARTICIPATION

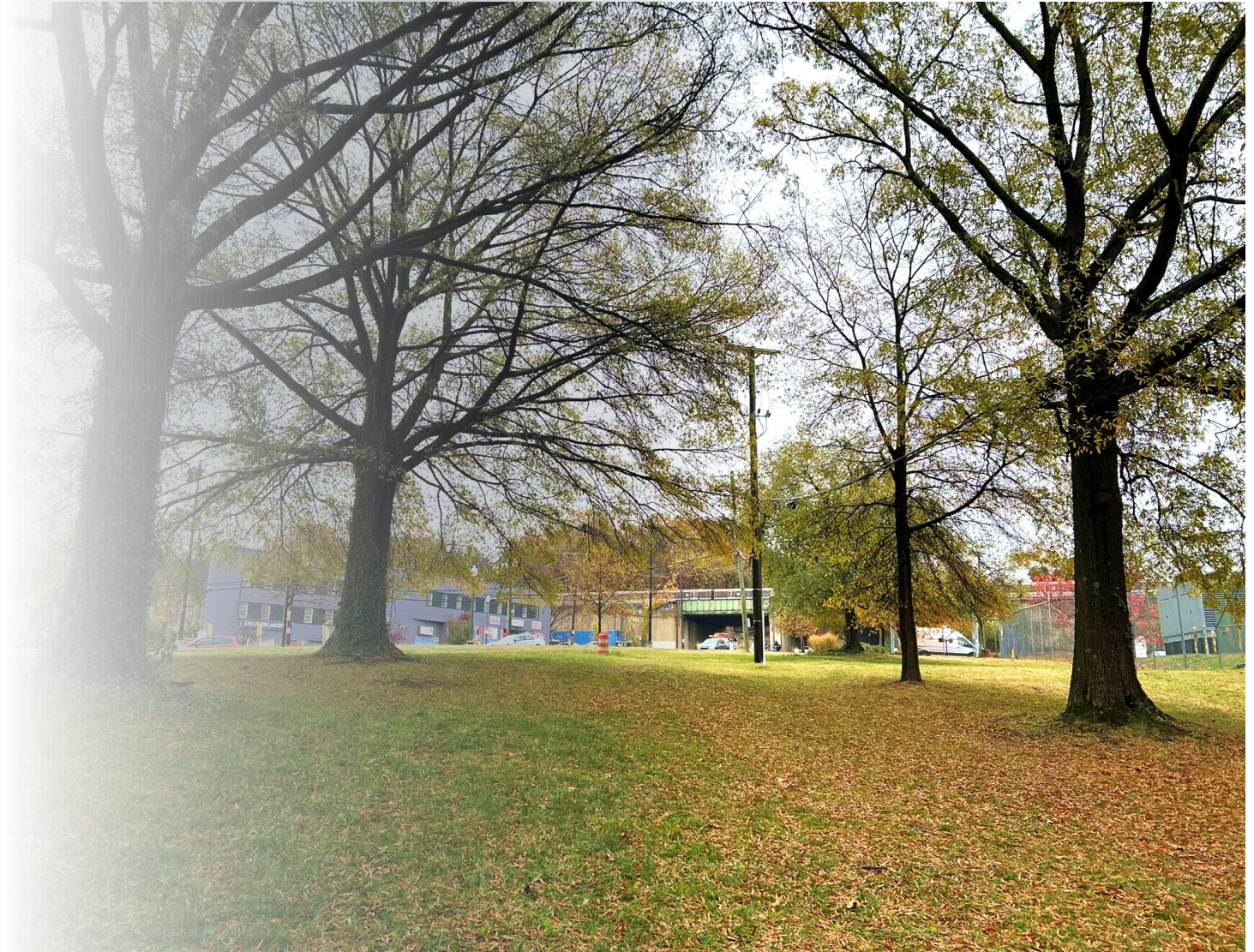
- Please take a photo of the QR Code to sign in for our email list for this project.
- Be courteous
- Respect others
- Allow space for all to speak
- We'll do the best we can to answer all questions
- If there are any questions we cannot answer at this time, we will follow-up after this meeting





# MEETING AGENDA

- 1 Introduction
- 2 Proposed Project Scope & Budget
- 3 Park Improvements
- 4 Comparable Projects
- 5 Contact Information
- 6 Question and Answer





# DC GOV TEAM MEMBERS

---



**SHAYDA MUSAVI**

Landscape Architect  
Project Manager  
**DPR**



**RILEY PIVA**

Community Planner  
Project Manager  
**DPR**



**RASHEED JIBREEL**

External Affairs  
**DPR**



**VICTOR MEDINA**

Project Manager  
**DGS**



**CHARLEE BELL**

External Affairs  
**DGS**



# DESIGN-BUILD TEAM MEMBERS

---



**CHRIS EARLY**

Principal  
**Greening Urban**



**GARY WOOLSEY**

Project Engineer  
**Greening Urban**



**TAMARA DENNIS**

Project Manager  
**Atmos Solutions Inc.**



**BRIAN BUTLER**

Chief Operating Officer  
Project Executive  
**Atmos Solutions Inc.**



# PROJECT OVERVIEW

---



## PROJECT BUDGET

\$337,500.00



## OBJECTIVE

This project includes initial improvements to the green space at the corner of Riggs Road NE and South Dakota Ave NE. This park is currently heavily trafficked with pedestrians cutting through the park, so the main goal is to improve circulation and begin activating the space by adding a new pathway, seating, and other amenities.

## PROPOSED SITE FEATURES:

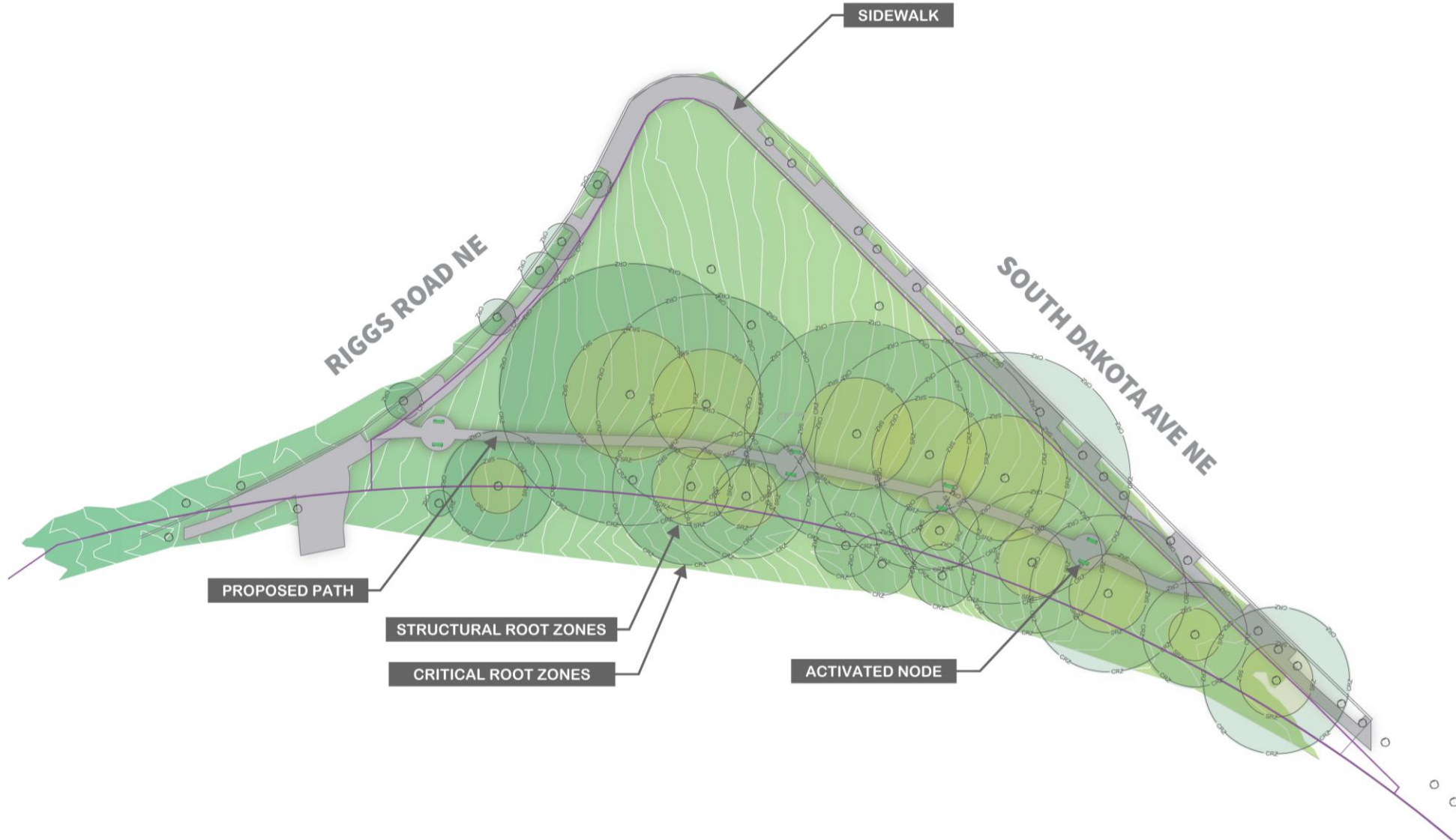
- Improved Circulation
- New Pathway
- Seating
- Trash and Recycling Receptacles



# PARK IMPROVEMENTS



# SITE PLAN





# SEATING OPTIONS



## COLOR OPTIONS



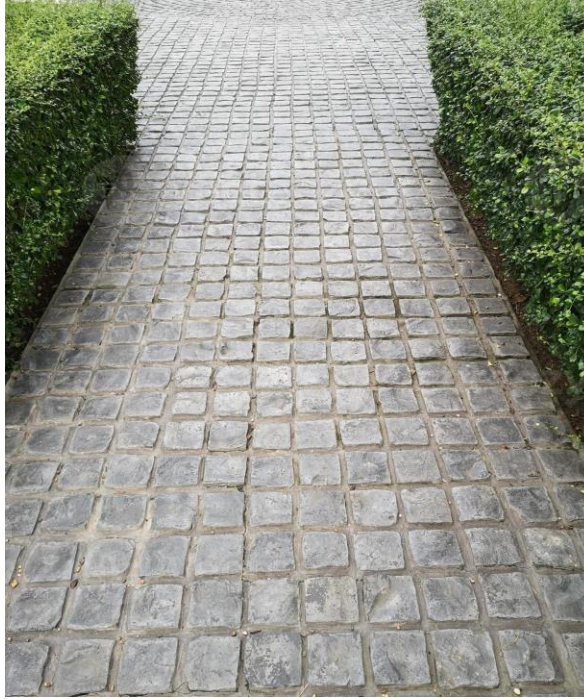


# HARDSCAPE TEXTURE/COLOR OPTIONS

---



**BRUSHED CONCRETE**



**STAMPED CONCRETE**  
*COBBLE STONE*



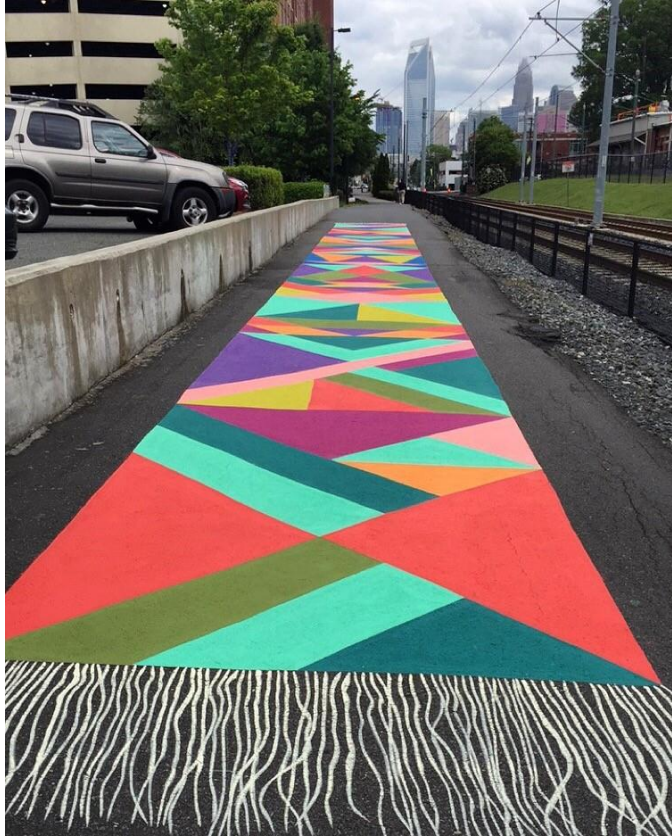
**STAMPED CONCRETE**  
*FLORAL IMPRINTS*



**COLORED CONCRETE**



# COMMUNITY-DRIVEN BEAUTIFICATION





# TREE PROTECTION AND TREATMENT



**Special Trees**

**CIRCUMFERENCE = 44" - 99.9"**

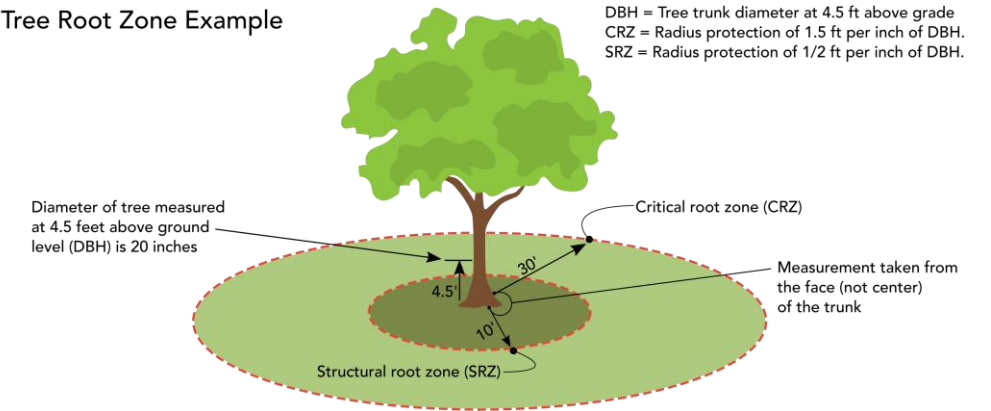
Special trees are trees on private land with a circumference between 44 inches and 99.9 inches. Permits may be issued if the tree is Hazardous, if the tree is of a species that is appropriate for removal or if a permit is purchased. A permit costs \$55 for each inch of circumference. Removing a Special tree without a permit will result in a fine of \$300 per inch of circumference in addition to the cost of the permit.

**Heritage Trees**

**CIRCUMFERENCE = 100"+**

Heritage trees may not be cut down unless they are determined to be hazardous or are a species that has been identified as appropriate for removal. Removal of a Heritage tree outside those parameters can only be done with a mayoral decree. Removing a Heritage tree without one of these determinations will lead to a fine of no less than \$300 per inch of the circumference.

Tree Root Zone Example



District Department of Transportation  
Urban Forestry Division

trees.dc.gov

d.



# SHORT-TERM IMPROVEMENTS





# POTENTIAL FUTURE IMPROVMENTS

---





# COMPARABLE PROJECTS

---

**DPR has implemented many small park improvement projects with similar budgets, see examples below. Please note that Riggs & South Dakota Park has unique characteristics, such as the grade and the presence of large Heritage Trees, that will contribute to the costs.**

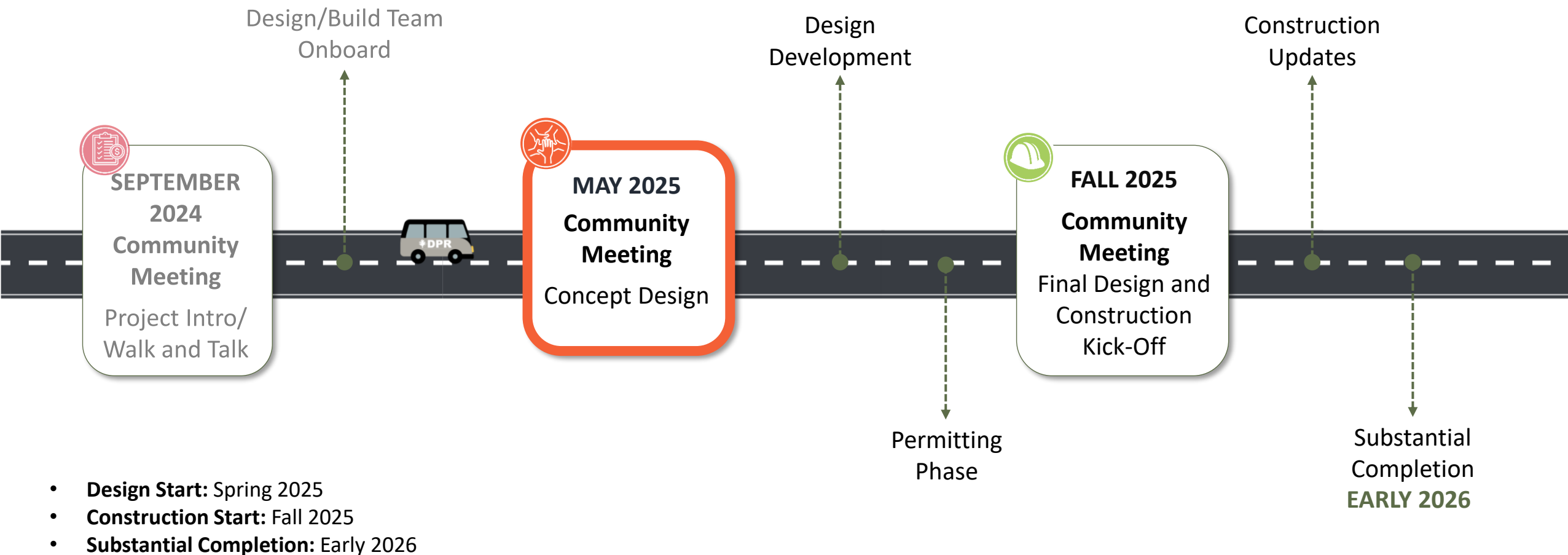
## **Lorenzo “Larry” Allen Park**

- Budget: 350,000
- Year: 2020/21
- Size: 0.56 acres
- Scope: Modernization of Lorenzo ‘Larry’ Allen park included new walkways and site amenities including new signs, seating and trash receptacles and park commemoration.

## **Crestwood Triangle Park**

- Budget: \$250,000
- Year: 2023/24
- Size: 0.20 acres
- Scope: The Crestwood Triangle Park renovation and improvements included: preserving existing trees, open space, and natural elements;☐ nature-inspired play spot;☐improvements to the lawn; new trees; ADA access; new site furnishings and signage.

# PROJECT MILESTONE TIMELINE





# CONTACT INFORMATION

---

## DEPARTMENT OF GENERAL SERVICES (DGS)

**Charlee Bell** | Community Engagement and Outreach

charlee.bell2@dc.gov

## DEPARTMENT OF PARKS & RECREATION (DPR)

**Rasheed Jibreel** | Community Engagement and Outreach

rasheed.jibreel@dc.gov

## PROJECT WEBSITE:

<https://dgs.dc.gov/page/riggs-south-dakota-park1-0>

JOIN OUR EMAIL LIST



Email List Sign-in  
DPR.DC.GOV/ATTENDEE



# THANK YOU

## QUESTIONS?