



# SJS Update

# Mission

Our mission is to catalyze an integrated community of middle-school learners to be scholar-activists who are designers of a more just world. In order to design a more just world, our students require an education that embraces and lives out a set of core beliefs about what it means to be human.



**Love**



**Learning**



**Liberation**

# Why SJS?



*In Washington, D.C., deep educational inequities persist, disproportionately affecting Black and Brown students. With 60% of our scholar-activists considered at-risk and 95% identifying as Black, the Social Justice School exists to disrupt systemic barriers and provide an education rooted in liberation, equity, and community empowerment. In a city where wealth and opportunity gaps continue to widen, our school is a necessary space for students to develop critical consciousness, academic excellence, and advocacy skills to drive meaningful change. Now more than ever, we must cultivate young leaders who can reimagine and build a just future for D.C. and beyond.*

# Our Crew



# Our Crew



# Key Takeaways: Highlights

## Highlights

- **We're achieving our mission!** SJS fully met mission-specific charter goals for SY23-24
- **We found a home!** SJS has secured a permanent facility for scholars that will open fall 2026
- **Our program is working!** Scholar Activists who are at SJS more than 2 years are more likely to score within the 40th+percentile in Math and ELA than scholars new to the school
- **Students are improving academically.** Based on winter 25 MAP scores, student proficiency and growth are on-track to improve from SY23-24. Students have Increased 4+ proficiency in ELA and Math from 2022 to present.

# Key Takeaways: Highlights

## Highlights

- **We're achieving our mission!** SJS fully met mission-specific charter goals for SY23-24
- **We found a home!** SJS has secured a permanent facility for scholars that will open fall 2026
- **Our program is working!** Scholar Activists who are at SJS more than 2 years are more likely to score within the 40th+percentile in Math and ELA than scholars new to the school
- **Students are improving academically.** Based on winter 25 MAP scores, student proficiency and growth are on-track to improve from SY23-24. Students have Increased 4+ proficiency in ELA and Math from 2022 to present.

# Key Takeaways: Areas of Opportunity

## Opportunities

- The lack of a permanent facility adversely impacted enrollment, re-enrollment, and the program model.
- New scholars are **two-times more likely not to be proficient in ELA** and **three-times more likely not to be proficient** in math than returning SJS scholars.
- SJS academic program had to flex to meet the needs of new, lower-performing students. We quickly restructured curricular and instructional resources to meet depth of new scholar needs, given new students entering at 5% proficiency in ELA and 0% proficiency in math.





# Facilities Search Process + Updates

# Our Journey & Progress to Date

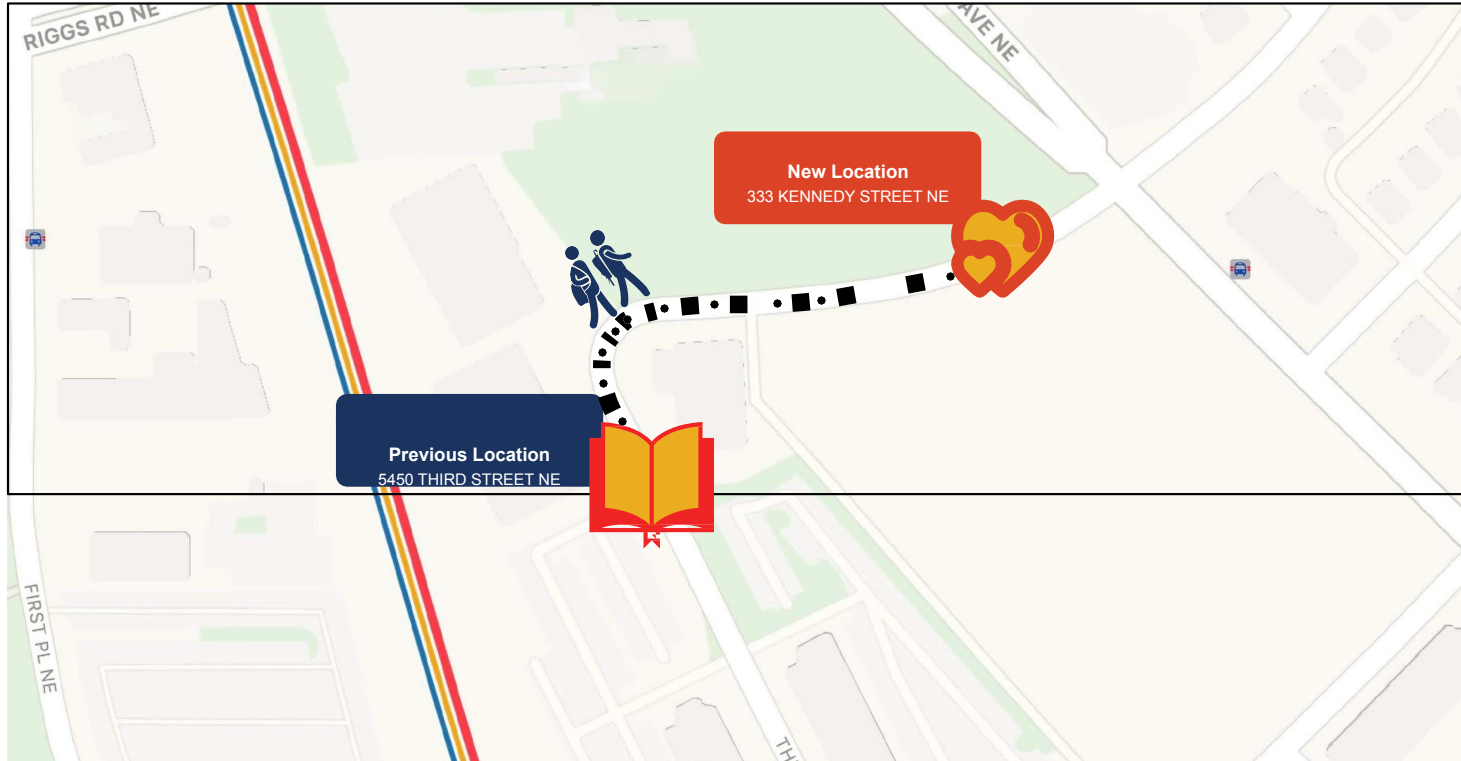
For the past 20 months, SJS has been implementing a facilities expansion plan across **parallel paths** focused on a **short-term incubation space** with eventual relocation into a **state-of-the art, permanent facility**.



# Our New Temporary Home

Starting in Fall 2024, our new location will be **333 Kennedy Street NE, Washington, D.C. 20011**. It is only a **two minute walk** from our current location

SOCIAL  
JUSTICE  
SCHOOL



# Key Decision Drivers



## ENROLLMENT

Highest demand location for existing and prospective families, supporting enrollment growth.



## CONTINUUM OF COMMUNITY LEADERSHIP

Allows SJS scholars to continue growing their deep roots in Lamond Riggs community, advancing the school's



## LONG-TERM EXPANSION

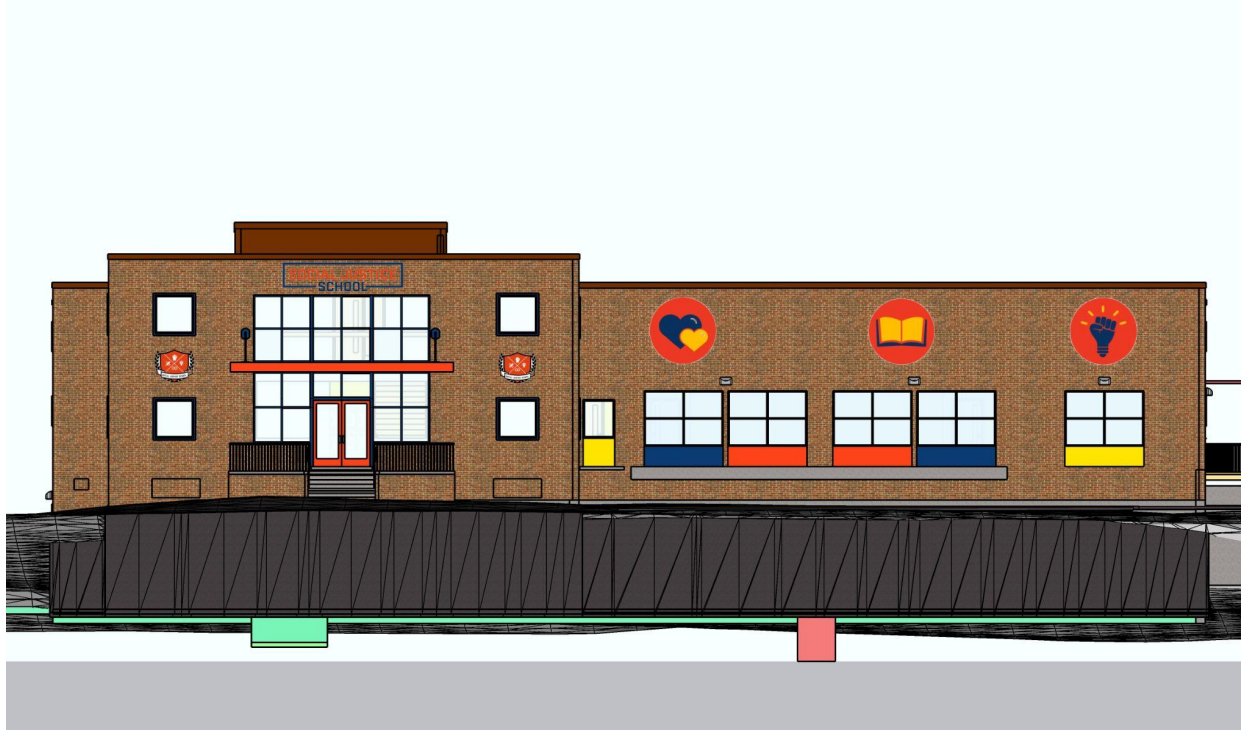
Adjacent to a potential long-term home & 5455 Third, allowing growth to up to 300 students.



## COMMUNITY DEVELOPMENT

Situated within an ongoing multi-phase community-focused development project.

# 5455 Third Street: Exterior Design

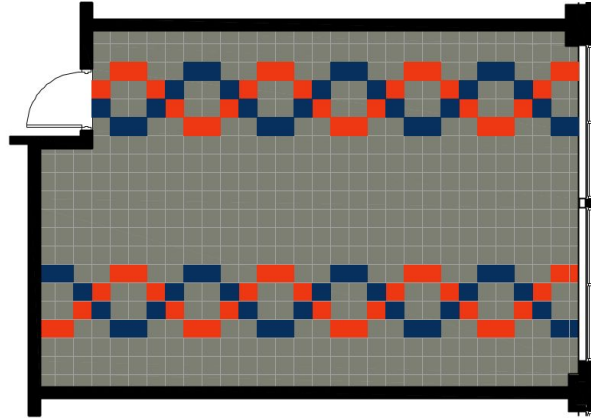


# 5455 Third Street: Floor Design

RASHIDARCHITECTS  
ARCHITECTURE • INTERIORS • PLANNING

The Social Justice  
School

SOCIAL JUSTICE  
SCHOOL

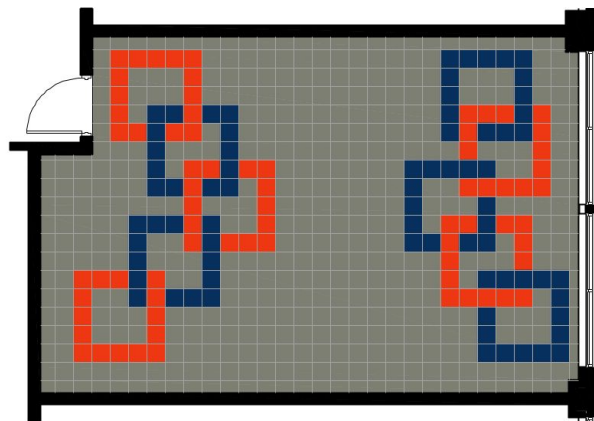


Classroom Finish Plan - Scheme 8 - DNA



**RASHIDARCHITECTS**  
ARCHITECTURE • INTERIORS • PLANNING

**SOCIAL JUSTICE**  
**SCHOOL**



A8



3/5/25



# Next Steps and timeline

## Temporary Structures and Locations for the 2024-2025 School Year

- **Modular Classrooms:** Six modular classrooms will be located at **333 Kennedy Street**.
- **Gym & Related Services:** These will be housed at **Impact DMV** to ensure scholar-activists have access to physical education and support services.



## Temporary Structures and Locations for the 2024-2025 School Year

### Timeline for Move and Construction

- **Current Phase:** We are in the **design phase** and will begin submitting **permits** soon.
- **Projected Occupancy:**
  - **Latter part of the 2025-2026 school year** (pending construction progress).
  - **Full occupancy by Summer 2026** to prepare for the **2026-2027 school year** if delays occur.
- **Commitment:** We will provide regular updates to ensure a smooth transition to our permanent home.

# Next Steps and timeline