



ANC5A Meeting

October 23rd, 2024

4350 1st Street NE

育英

**WASHINGTON
YU YING
PUBLIC CHARTER SCHOOL**





**Inspiring and preparing
young people to create a
better world by
challenging them to reach
their full potential in a
nurturing Chinese/English
educational environment**



Washington Yu Ying Public Charter School

Every year, demand for our school's special model of education outstrips the space available.

Why Grow?

- ✓ Provide more high-quality opportunities for students in DC
- ✓ Increase the economic diversity of our student populations
- ✓ Develop in-house career pipelines for our strong talent base and keep our qualified teachers

Yu Ying offers **equitable access preference**.

This means we set aside a certain number of seats for students who are:

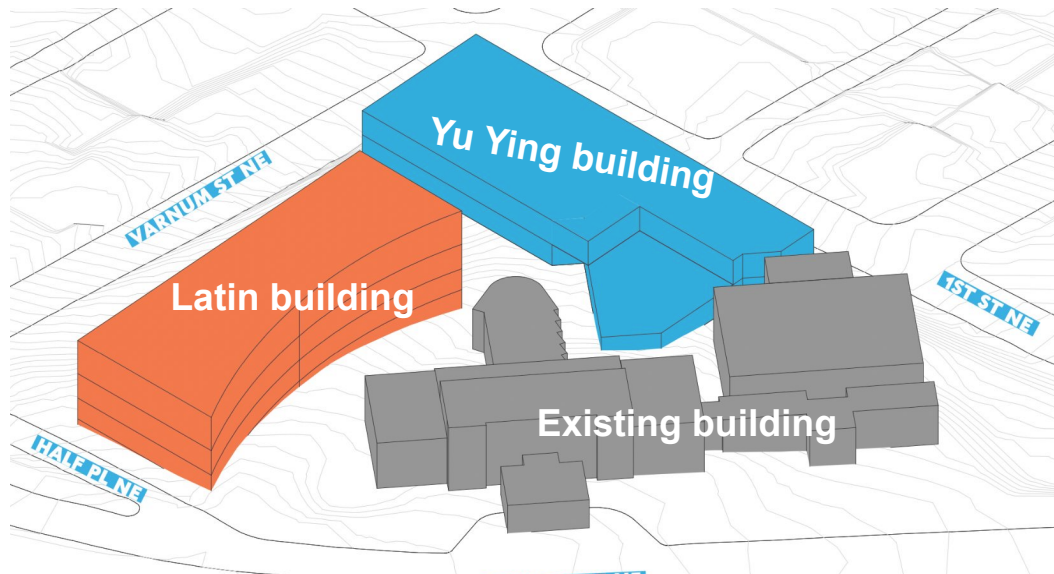
- Experiencing homelessness
- In the DC foster care system
- Qualify for government benefits such as SNAP or TANF

Our goal is to ensure that our school are accessible to families across DC, and that our enrollment will reflect the diversity of the city.



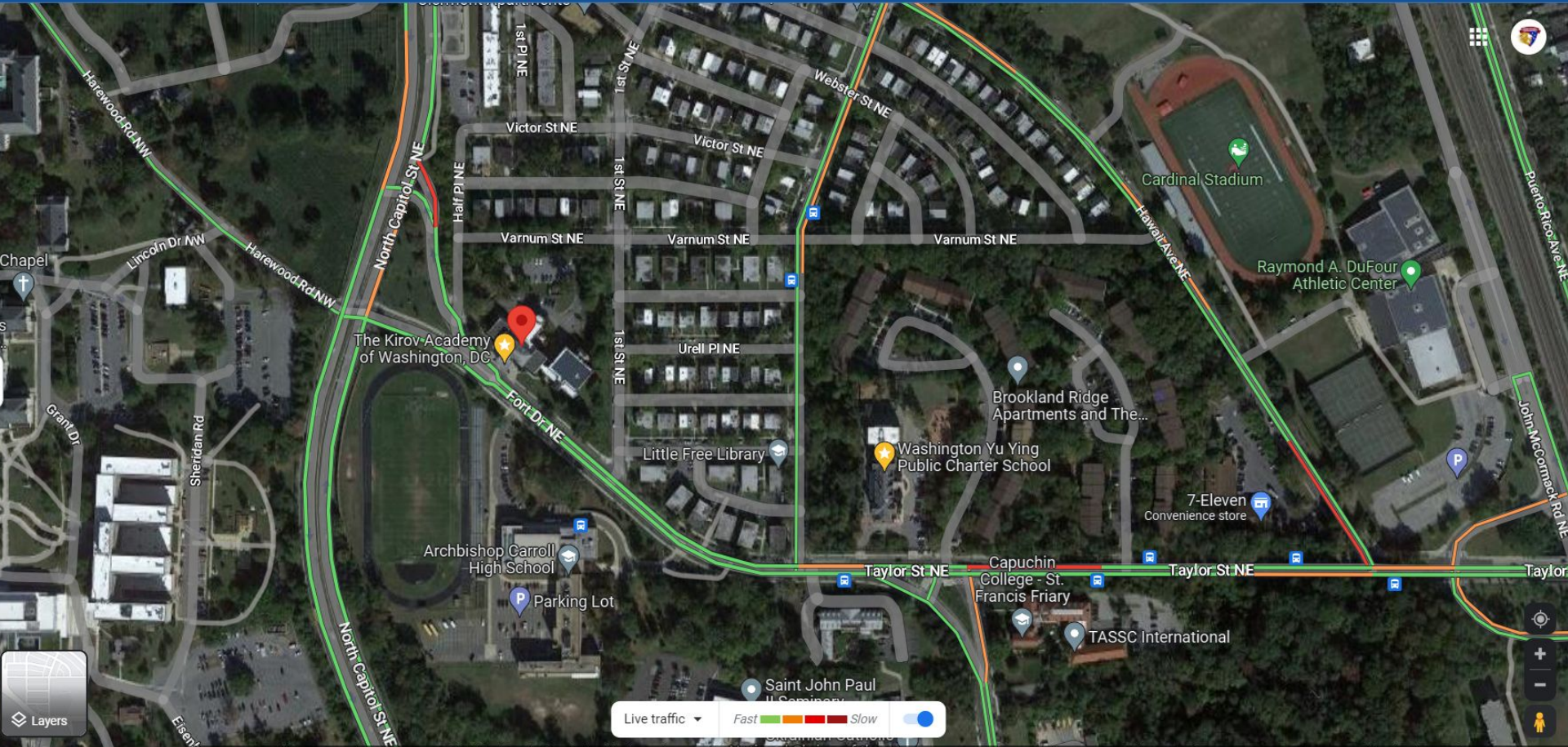
Washington Latin & Washington Yu Ying are building a joint project at the former Kirov Ballet School.

- A three facility campus with **1 new building for Latin**, **1 new building for WYY** and rehabilitation of the existing Kirov building.
- **WYY's new building** will be the home of our **Early Learning Campus for PK3, PK4 and kindergarten**
- **Parking and traffic strategies** are being coordinated with both schools.



Joint Campus @ 4301 Harewood Road NE

Challenges & Opportunities



We recognize that this project brings new opportunities and challenges.

Opportunities

- New play and green spaces
- Traffic calming
- Sidewalks and other public space improvements
- Events and activities

Challenges

- Construction crews and working schedules
 - **11/11 Holiday Work Request (Regular School Day for YY)**
- Limited parking
- Increased traffic movement

4350 1st Street NE

育英

WASHINGTON
YU YING
PUBLIC CHARTER SCHOOL

Approach to Traffic & Safety Issues

At 4350 1st Street NE, we will work to improve safety and neighborhood connectivity. We will:

- Encourage use of bicycles
- Encourage use of public transit
- Use of nearby parking lots to reduce impact on neighborhood parking during the day and for events that will require significant numbers of parents (or other visitors) to be on site
- Maintain a flexible mindset and approach to pick up/drop off procedures

4350 1st Street NE

Traffic Mitigation

The new design includes the following proposed traffic and public safety improvements:

- ~120 feet of new sidewalk along the east side of Half Place NE;
- High-visibility crosswalks at the intersections of Half Place NE and Varnum Street NE; 1st Street NE and Varnum Street NE; 1st Street NE and Urell Place NE
- ~230 feet of new sidewalk along the west side of 1st Street NE;
- The closure of two (2) existing curb cuts along Fort Drive NE; and
- The narrowing of the existing curb cut at the southern driveway on Half Place NE from 20 feet to 12 feet in public space



Questions or Comments?

Please email me at
jose.sousa@washingtoneyuying.org