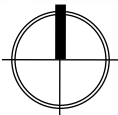


LAMOND-RIGGS CMP
CAMPUS AERIAL VIEW



LAMOND-RIGGS CMP
CAMPUS PLAN BOUNDARY,
COMMUNITY CONTEXT, AND
EXISTING ZONING DISTRICTS

LEGEND

- Campus Boundary
- Zoning Boundary
- R-2 Residential
- MU-29 Mixed Use
- RA-1 Residential Apartments
- PDR-1 Production, Distribution, Repair
- PDR-6 Production, Distribution, Repair
- PDR-7 Production, Distribution, Repair
- MU-4 Mixed Use
- MU-28 Mixed Use

REQUIREMENTS	ZONE R – 2	EXCEPTIONS
FAR	Not described	1.8 (TABLE X § 101.5)
HEIGHT	40 ft (3 stories)	50 ft (TABLE X § 101.5)
REAR YARD	20 ft	Measured from the center line of street
SIDE YARD	8 ft	
LOT OCCUPANCY	40%	
PARKING	114	
2 for each 3 teachers; plus either 1 for each 10 classroom seats or 1 for each 10 auditorium seats, whichever is greater, except if a campus plan has been approved by the Zoning Commission or the Board of Zoning Adjustment for the college or university, in which case the parking shall be provided as set forth in the approved campus plan		
50% Reduction (702.1 (a))		



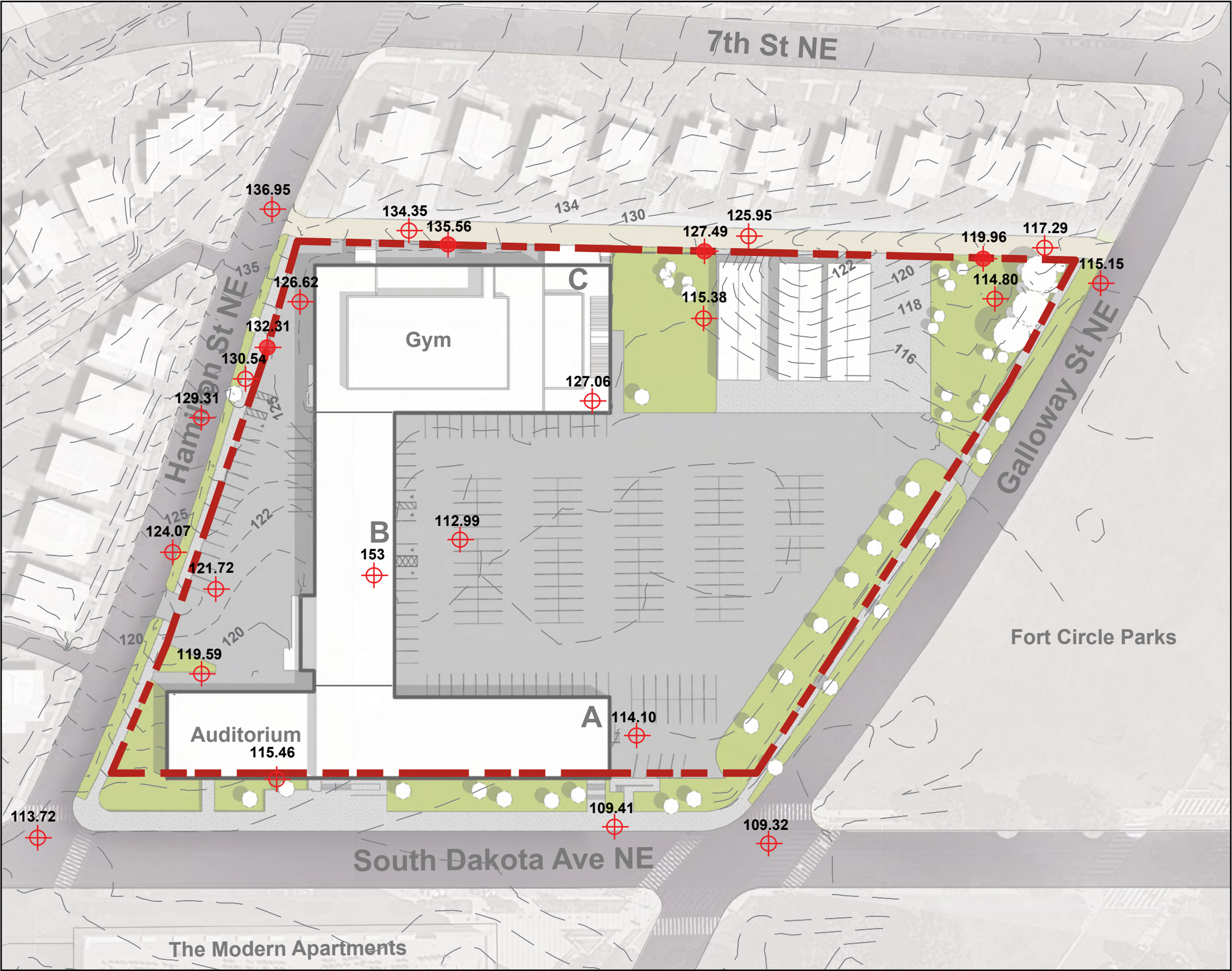
LAMOND-RIGGS CMP
EXISTING CONDITION
SITE DIAGRAM

- LEGEND**
- A,B,C** Lamond-Riggs Campus Wings
- Campus Boundary
- 8' Metal Picket Fence On Concrete Retaining Wall
- 10' Chain Link Fence On Concrete Retaining Wall
- 10' Chain Link Fence
- ▶ Building Entry
- ① Bio-Retention Area
- ② Equipment Service Area
- ③ Outdoor Seating Terrace
- ④ Community Garden
- ⑤ Green Houses
- ⑥ Existing Parking
- ⑦ Pocket Park / Ag Pod
- ⑧ Existing Single Family Residences

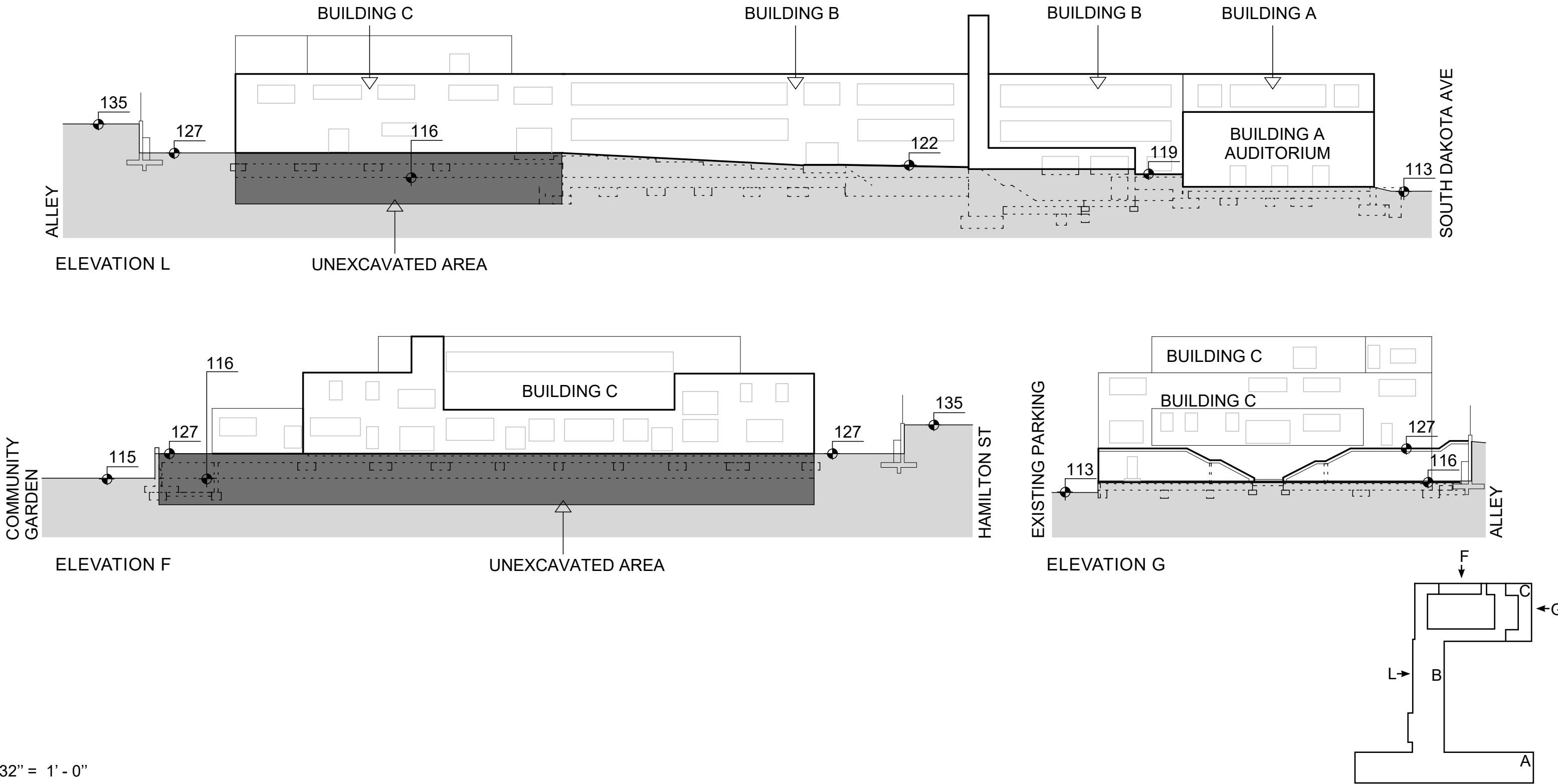


LAMOND-RIGGS CMP
CAMPUS TOPOGRAPHY DIAGRAM

- LEGEND**
- Campus Boundary
 - Interval Topography Lines
 - ⊕ Spot Elevations (Above Sea Level)
 - ⊕ Top of Wall Spot Elevations (Above Sea Level)



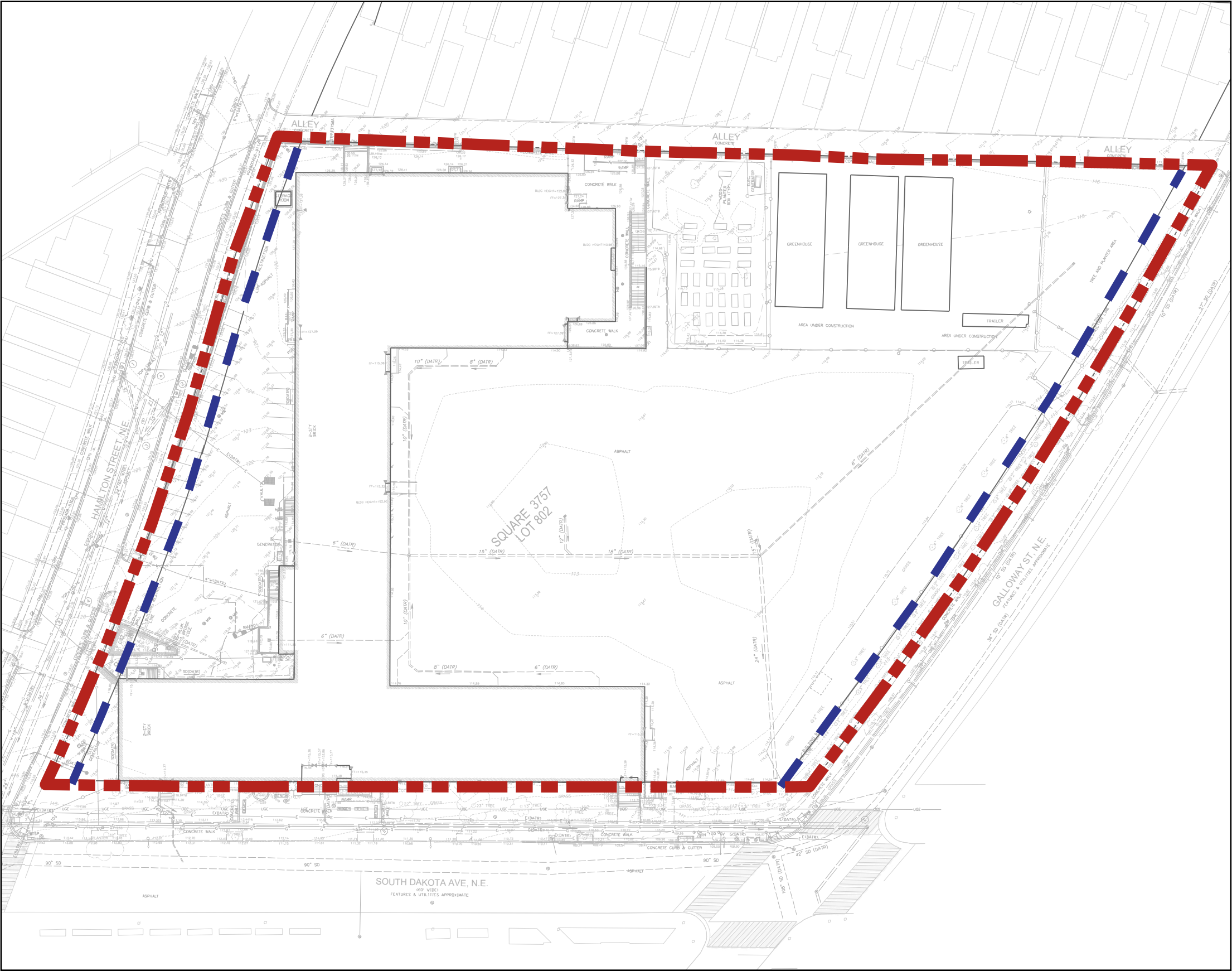
LAMOND-RIGGS CMP
EXISTING BUILDING ELEVATIONS WITH STREET SECTIONS



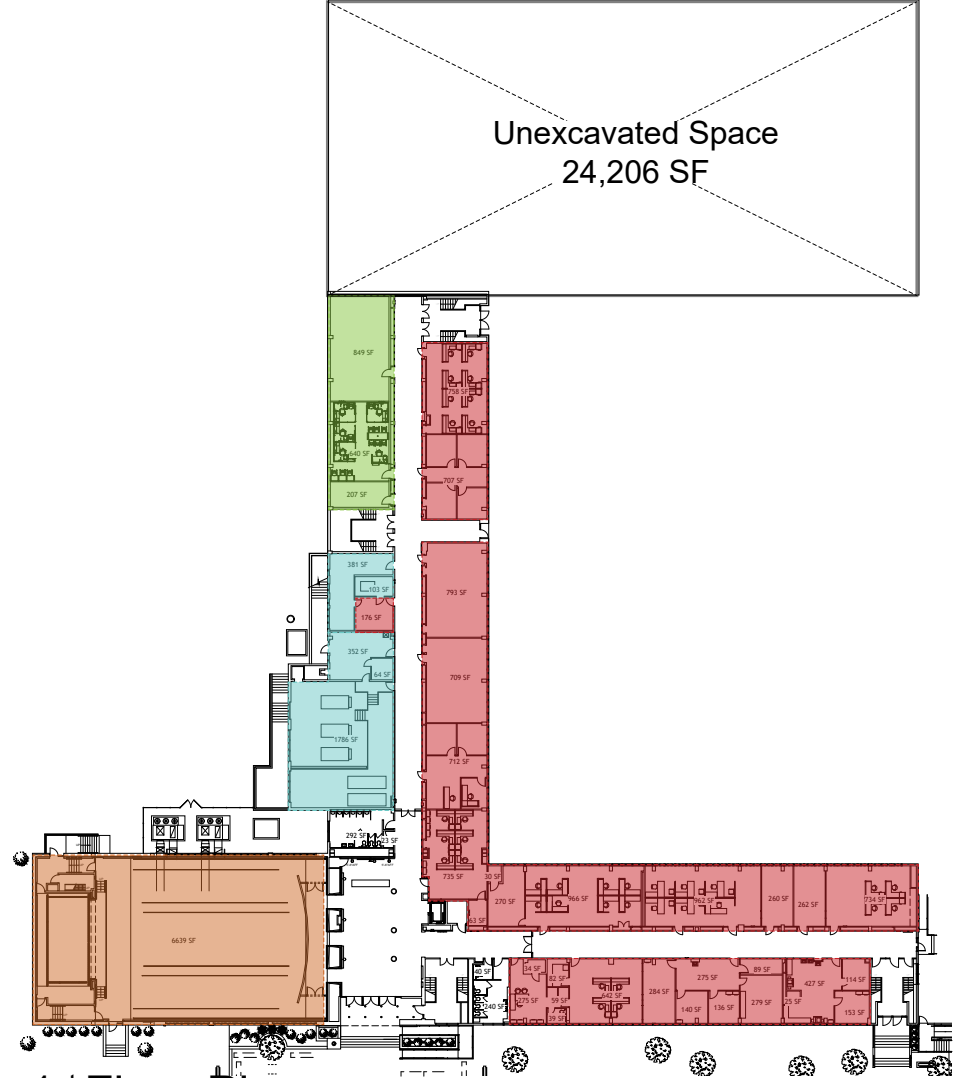
1/32" = 1' - 0"

LAMOND-RIGGS CMP
CAMPUS CIVIL SITE SURVEY

- LEGEND
- Civil Survey Area
 - Building Restriction Line

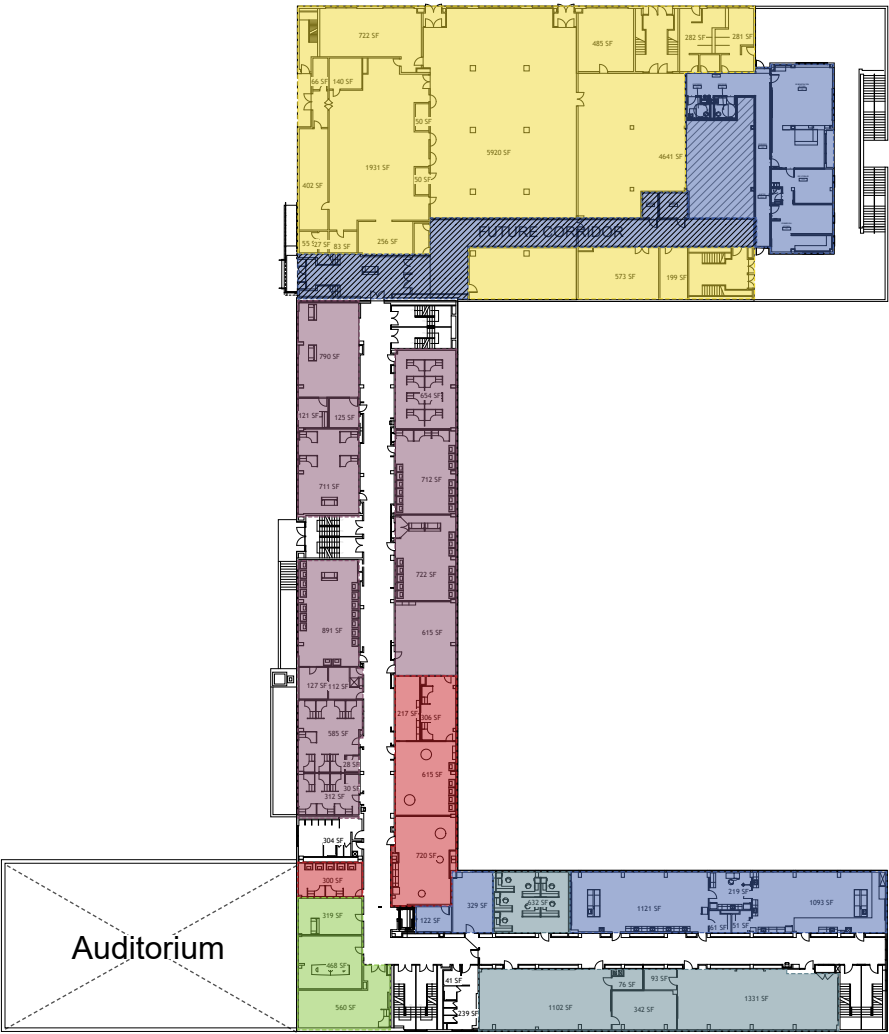


LAMOND-RIGGS CMP
EXISTING SPACE UTILIZATION



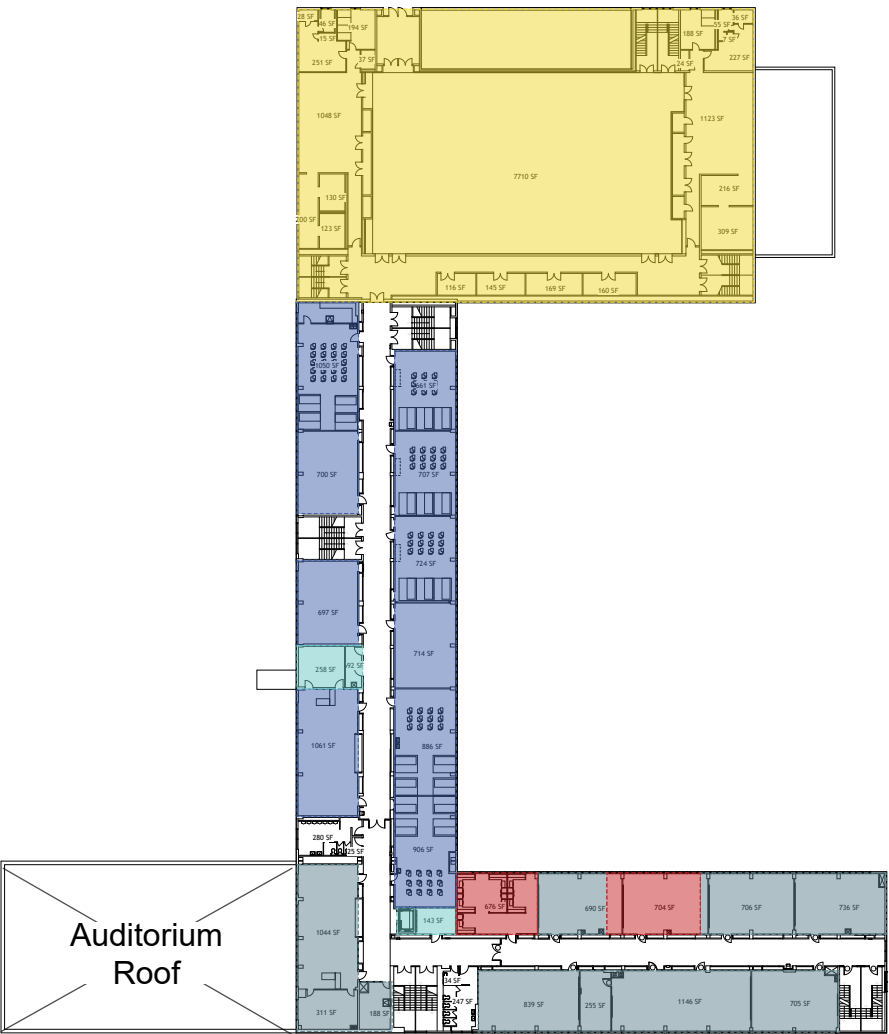
1st Floor Plan

A= 13,402 SF
B= 14,046 SF



2nd Floor Plan

A= 13,441 SF
B= 12,503 SF
C= 20,892 SF



3rd Floor Plan

A= 13,441 SF
B= 12,503 SF
C= 18,801 SF
GYM= 8,376 SF

Legend

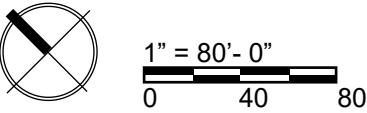
Classroom Lab Admin Service Area DOES Student Resource Unused Space Auditorium

Academic Spaces25,663 SF
Administration Space...14,954 SF
DOES.....6,640 SF (Available for use)

Original Dining/Kitchen Room - 2nd Floor.....14,403 SF (Available for use)
Demonstration Kitchen - 2nd Floor.....3,177 SF
Original Gymnasium, Locker Rooms - 3rd Floor.....12,623 SF (Available for use)

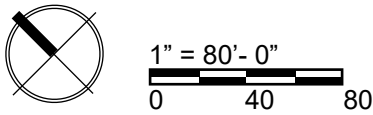
LAMOND-RIGGS CMP
EXISTING CAMPUS BUILDING
HEIGHTS DIAGRAM

- LEGEND
- A,B,C Lamond-Riggs Campus Wings
 - Campus Boundary
 - Spot Elevations



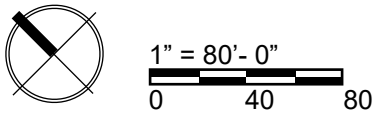
LAMOND-RIGGS CMP
EXISTING PERVIOUS &
IMPERVIOUS SURFACE DIAGRAM

- LEGEND**
- Campus Boundary
 - Pervious Surface: 29,795 SF (13.96%)
 - Impervious Surface: 116,501 SF (86.04%)
 - Building Impervious Surface: 67,109 SF
- Wing A Gross Area: 47,363 SF
- Wing B Gross Area: 39,052 SF
- Wing C Gross Area: 39,693 SF
- Greenhouse Gross Area: 8,376 SF
- Building Gross Area (Includes Greenhouses): 134,484 SF
- Wing A Footprint: 20,481 SF
- Wing B Footprint: 14,046 SF
- Wing C Footprint: 24,206 SF
- Green House Footprint: 2,792 SF



LAMOND-RIGGS CMP
SOLAR STUDY DIAGRAM

- LEGEND**
- Campus Boundary
 - Sun Path
 - Optimal Growing Area
 - Sun Location
 - Wind Path



LAMOND-RIGGS CMP
EXISTING TRANSIT
SERVICES DIAGRAM

- LEGEND**
- Campus Boundary
 - Bike Path
 - M Metro Train Station
 - M Metro Bus Stops

Metro-rail Routes

- Red Line
- Yellow Line
- Green Line

Metro Bus Routes

- E4, 80
- R1, R2
- K6, E2, F6, 60, 64



0 200 400

LAMOND-RIGGS CMP EXISTING LANDSCAPE & PEDESTRIAN CIRCULATION DIAGRAM

- LEGEND**
- Campus Boundary
 - Pedestrian Paths
 - Retaining Walls/Campus Boundary
 - Internal Green Space
 - Public Green Space
 - Wooded Green Space
 - Main Pedestrian Points
 - Entry Points
 - ♿ ADA Entry Point
 - ① Equipment Service Area
 - ② Outdoor Seating Terrace
 - ③ Community Garden
 - ④ Green Houses
 - ⑤ Pocket Park
 - ⑥ Bio-Retention Area
 - ⑦ Loading /Service Area

