



DC Bilingual Presentation on School Growth

*Presentación
sobre crecimiento escolar de DCB*

Agenda

1. **What we are building & why?**
2. **What is the construction timeline & What have we done already?**
3. **What do I need to know right now!?**
4. **What do you need from the school moving forward?**



A group of young girls are performing in a school hallway. They are wearing traditional Salvadoran folk costumes, which include white short-sleeved blouses with lace trim and long, full skirts with blue and white ruffles. The skirts feature the national coat of arms of El Salvador and the text "REPUBLICA DE EL SALVADOR EN LA AMERICA CENTRAL" and "El Salvador". The girls are standing on a checkered floor, and a boy in a white shirt and straw hat is visible in the background. The image has a pinkish-red tint.

What are we building & why?

What are we building?/*Que vamos a construir?*







Publ







Why DCB is Considering Growth / *¿Por qué DCB está considerando crecer?*

1. To serve more children whom we know how to serve (at risk, ELL, SPED, etc.); *Para servir a más niños a quienes sabemos servir (en riesgo, ELL, SPED, etc.);*
2. To meet significant school demand;/ *Para satisfacer una demanda escolar significativa;*
3. To add and improve campus amenities; / *Para agregar y mejorar las comodidades del edificio escolar*
4. To provide more opportunities and resources to learn, adopt, and share best practices; and / *Para proporcionar más oportunidades y recursos para aprender, adoptar y compartir las mejores prácticas; y*



Build cognitive and
adaptive life skills



Develop dual-language
learners and global
citizens



Grow and empower the
Professional Learning
Community



Create an inclusive,
vibrant, learning
community

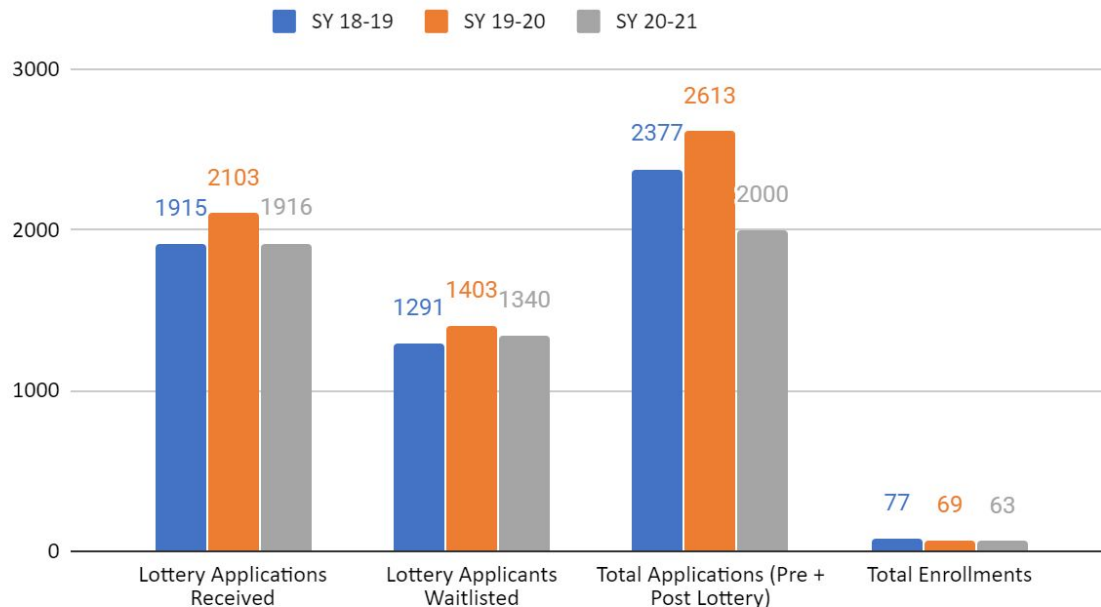


Operate sustainably

High Demand for DC Bilingual/ *Alta demanda por los servicios de DCB*

DCB is in high demand, however its spots available continue to decrease over time due to sibling and staff school entry preference / *DCB tiene una gran demanda, sin embargo, sus cupos disponibles continúan disminuyendo con el tiempo debido a la preferencia de hermanos y personal de ingreso a la escuela.*

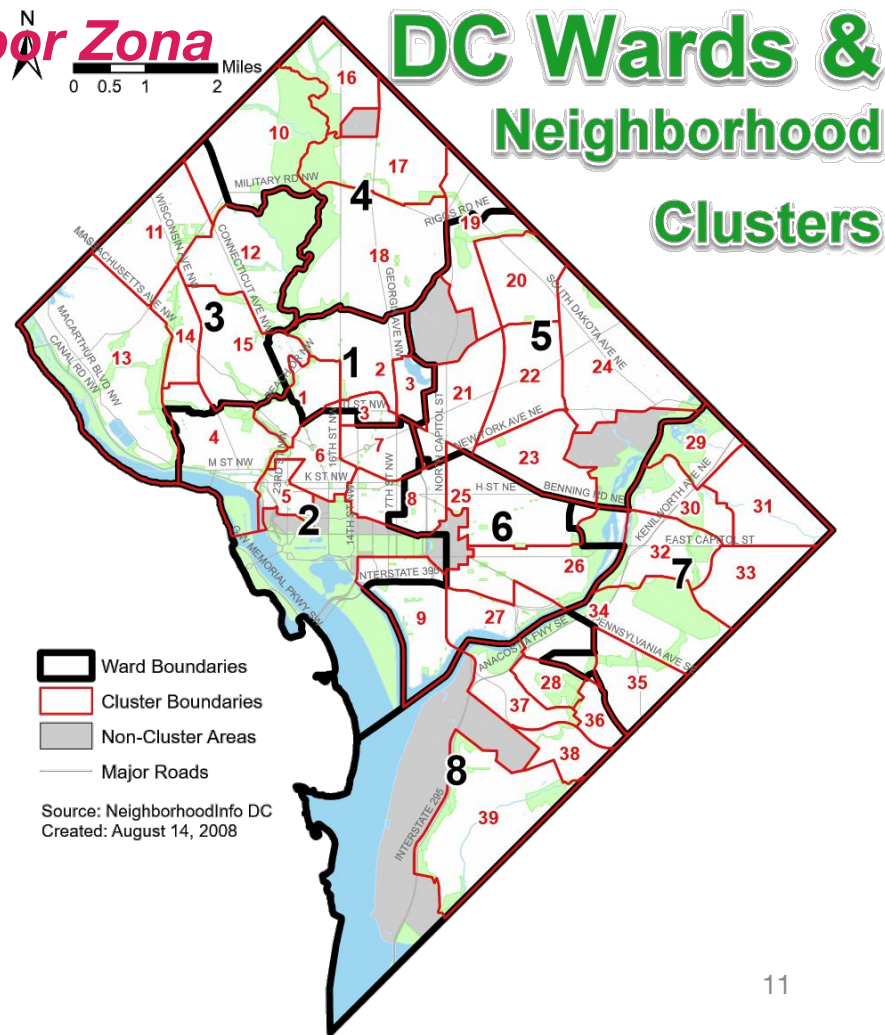
Applications, Waiting List, & Enrollment Totals: SY 18-19, SY 19-20, & SY 20-21 (approximation)



Lottery Applications for DCB by Ward

Solicitudes de la lotería para DCB por Zona

	SY 18-19	SY 19-20	SY 20-21
Ward 1	230	231	188
Ward 2	38	42	16
Ward 3	57	63	42
Ward 4	689	799	722
Ward 5	517	505	563
Ward 6	115	126	110
Ward 7	134	168	118
Ward 8	115	147	134
Other	19	21	23
TOTAL	1,915	2,103	1,916



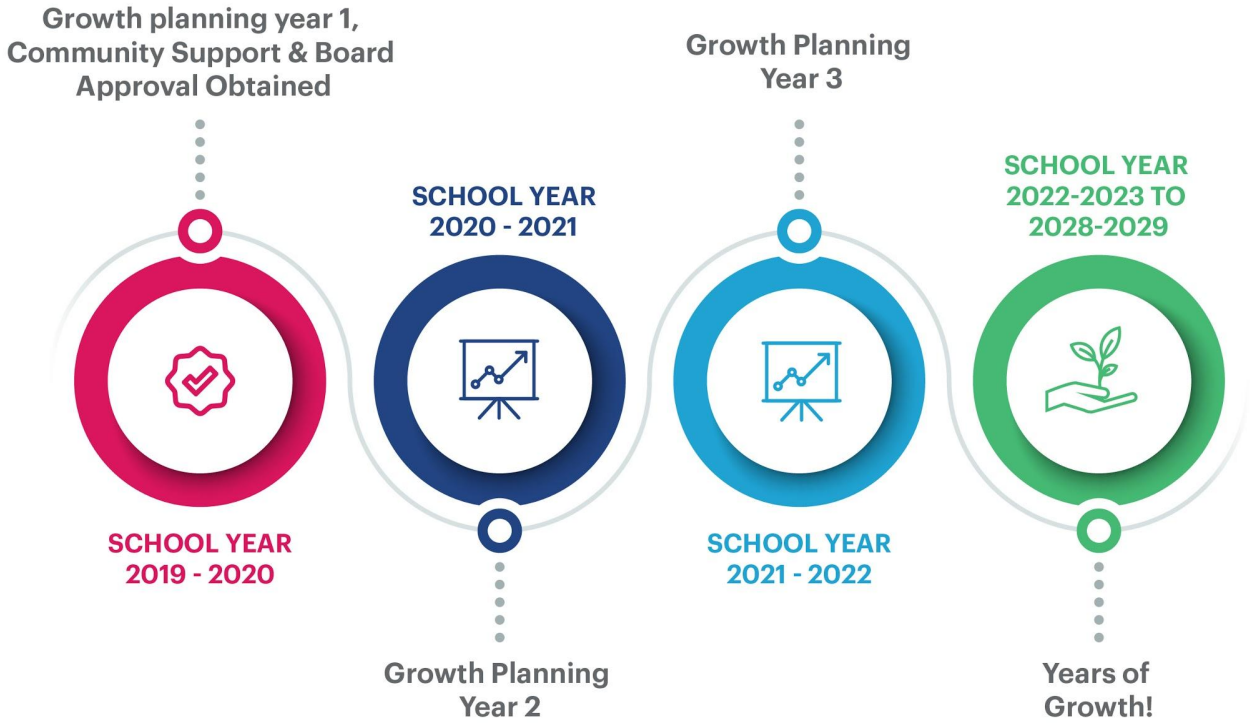
A photograph of three young children in a classroom setting, overlaid with a semi-transparent red filter. The child in the center is a young boy with dark hair, wearing a white collared shirt and a light-colored straw hat, smiling broadly at the camera. To his left is another child, partially visible, wearing a blue shirt and a straw hat. To his right is a girl with dark hair, wearing a white shirt, looking towards the center child. The background is slightly blurred, showing what appears to be a classroom environment.

Timeline for Growth, Enrollment & Steps Taken

***Línea de tiempo para el crecimiento,
matrícula y medidas tomadas***

NEW School Growth Timeline / Nueva línea de tiempo del crecimiento escolar

Due to Covid-19, construction plans have shifted to adjust for delayed construction start date, and later completion date (August 2022) / Debido al Covid-19, los planes de construcción se han modificado para ajustarse a la fecha de inicio de la construcción demorada y la fecha de finalización posterior (agosto de 2022)



Enrollment Projections / Proyecciones de matrícula

Colors mean/Los colores significan:

red/ rojo: four classes/ cuatro clases

blue/ azul: three classes / tres clases

yellow/ amarillo: two classes/ dos clases

5th grade 19-20 becomes Pk4 20-21 and we add a new K classroom										
	19/20	20/21	21/22	22/23 (GY)	23/24	24/25	25/26	26/27	27/28	28/29
PK3	38	40	40	72	72	72	72	72	72	72
PK4	43	60	60	80	80	80	80	80	80	80
K	48	73	72	72	96	96	96	96	96	96
1st	72	48	72	72	72	96	96	96	96	96
2nd	51	72	48	72	72	72	96	96	96	96
3rd	73	50	69	46	69	69	69	92	92	92
4th	68	73	50	66	44	66	66	66	88	88
5th	60	62	67	46	63	42	63	63	63	84
LL S-C				4	4	4	4	8	8	8
Total	453	478	478	530	572	597	642	669	691	712
New Additional Spots				52	42	25	45	27	22	21

A photograph of three children wearing straw hats, overlaid with a semi-transparent red filter. The child in the center is a young boy with a wide-brimmed straw hat, smiling slightly. To his left is another child in a similar hat, looking down. To his right is a girl in a straw hat, looking towards the center. The background is blurred, suggesting an outdoor setting.

What do I need to know right now? Que debo saber ahora mismo?

Parking Issues and Concerns / Community

Communication: *Logísticas del Estacionamiento*

- DC Bilingual will be circulating flyers about the plans in the surrounding neighborhood.
- DC Bilingual has rented two parking lots (91 parking spaces) to reduce the impact on neighborhood parking both during construction and following construction.
- DC Bilingual will work with the general contractor (Gilbane) to make sure workers are parking in designated locations and at the metro.

DCB parking rentals




A photograph of three children wearing straw hats, overlaid with a semi-transparent red and blue gradient. The child in the center is a girl with dark hair, smiling at the camera. She is wearing a white collared shirt and a wide-brimmed straw hat. To her left is a boy in profile, wearing a blue t-shirt and a straw hat with a blue band. To her right is another boy in profile, wearing a white shirt and a straw hat with a blue band. The background is blurred, suggesting an outdoor setting.

**How can I be involved & keep
track of the project?**

Please remain involved and Connected to the Project!

Here are ways you can stay updated on the project

- We are going to have ongoing updates on our website about the project logistics and developments
- We will attend monthly ANC meetings to provide updates and answer questions
- Community members can reach out to us directly with questions or request for information.



Questions or Comments?
Please contact John Breyer with any project
questions at (202) 352-0214 or
jbreyer@dcbilingaul.org.